

# CYCLONE PLUS

*Fiberglass Recirculation Fan*



Ventec Canada inc. certifies that the Cyclone Plus shown herein is licensed to bear the AMCA Seal. The ratings shown are based on tests and procedures performed in accordance with AMCA Publication 211 and comply with the requirements of the AMCA Certified Ratings Program.



Patented  
concept



La ventilation est notre spécialité  
Ventilation is what we do



# CYCLONE PLUS

Fiberglass recirculation fan

## RECIRCULATION FAN

One of our most versatile products is the Cyclone Plus variable speed fiberglass recirculation fan. Traditional ceiling fans slowly push the hot air from the ceiling down to the floor. The Cyclone Plus can do this on low speed and then as the speed increases; it creates air velocity for maximum air throw and cooling.

## APPLICATIONS

In dairy barns, Cyclone Plus creates very high air velocity for animal cooling, insect control, drying of bedding and employee comfort. Cyclone Plus unique airfoil deflectors direct the air over and under the animals. One Cyclone Plus can replace up to eight 36" basket fans and while using only half the power required for those. On low speed, you have an ideal winter fan for re-circulating air throughout the building, reducing humidity and recapturing trapped heat at the ceiling.

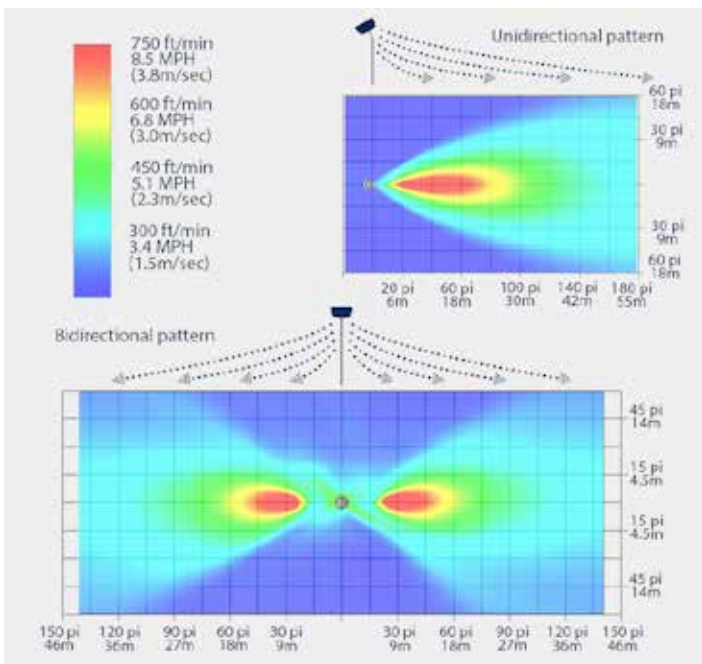
## HIGH PERFORMANCE AND INNOVATIVE DESIGN

- Adjustable airfoil deflectors optimize air throw distance and direction.
- Performance enhancing intake fiberglass cone.
- Balanced heavy duty corrosion resistant six-paddle aluminum blades.
- De-stratifying air at low speed, covering over 6 000 square feet.
- Optional variable frequency drive allowing smooth speed adjustments from 60 RPM to 245 RPM.
- Extremely quiet operation on every speeds.
- Automatic belt tensioner.

## FEATURES

- Corrosion resistant fiberglass housing.
- Can be mounted on steel post, building column or suspended from the ceiling (all optional mounts).
- Optional variable frequency drive.
- Still 3.4 MPH at 100 ft (1.5m/sec).

### DIAGRAM OF THE AIR FLOW FAN



This is not AMCA certified

### TECHNICAL SPECIFICATION

Propeller dimension	1.83m (72")			
HP	3.0			
Phase	1	3		
Voltage	230	208	230	460
Amperage *	13.2	8.6	8	4.3
Speed	Single	Variable		
RPM	304	60 @ 304		
Fan	Corrosion Resistant Steel			
Deflectors	100% PVC			
Blades	6-Aluminium			
Air Flow**	1 260 m <sup>3</sup> /min (44 562 CFM)			
Efficiency	0.68 m <sup>3</sup> /min (24.2 CFM) per Watt (24.1 lbf) per kW			

\* The Amps values depend on the motor manufacturer  
Available motors: 50 or 60 hertz  
\*The AMCA Certified Ratings Seal applies to airflow rate at free delivery only.  
\*\*Speed (RPM) shown is nominal. Performance is based on actual speed of test.  
\*\*Only performance for three phase motor 230/460V - 60Hz at 304 RPM is AMCA certified.



# CYCLONE PLUS

Fiberglass recirculation fan

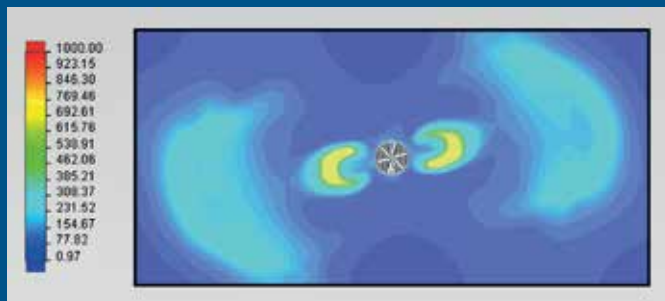


## THE ADVANTAGES OF CYCLONE PLUS

- The Cyclone Plus perform 44 562 CFM with 24.2 CFM per Watt and 24.1 lbf per kW. At nominal speed of 304 RPM with three phase 230/460V - 60Hz motor.
- The Cyclone Plus is quieter.
- Less loss of air at the sides of the fan.
- Includes an automatic belt tensioner.
- The outlet air is more in line with the fan.
- The Cyclone Plus is better balanced and vibrates less.
- The belt change is easily done without removing the propeller.

## CYCLONE PLUS

New version

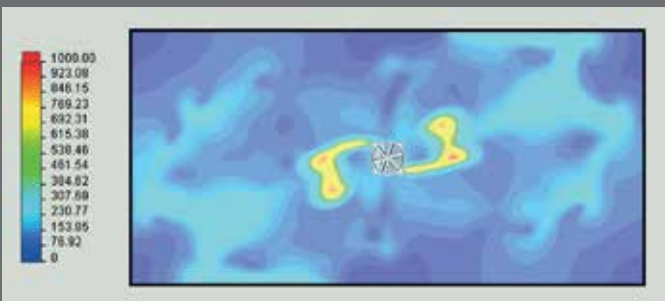
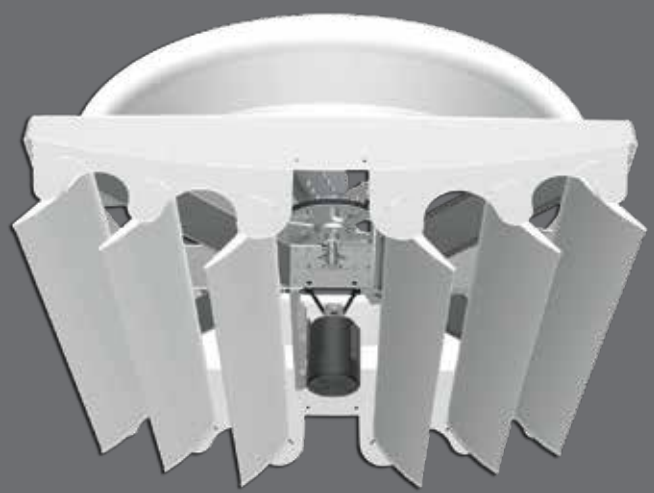


\* This data is not AMCA certified

Figure 1 - Pattern of wind speed (ft / min) the new version of the Cyclone Plus fan maximum speed at 5 feet above ground.

## CYCLONE

Previous version



\* This data is not AMCA certified

Figure 2 - Pattern of wind speed (ft / min) the previous version of the Cyclone fan maximum speed at 5 feet above ground.

# CYCLONE PLUS

## *Fiberglass Recirculation Fan*



- The Cyclone Plus perform 44 562 CFM with 24.2 CFM per Watt and 24.1 lbf per kW. At nominal speed of 304 RPM with three phase 230/460V - 60Hz motor.
- The Cyclone Plus is quieter.
- Less loss of air at the sides of the fan.
- Includes an automatic belt tensioner.
- The outlet air is more in line with the fan.
- The Cyclone Plus is better balanced and vibrates less.
- The belt change is easily done without removing the propeller.

For the last 25 years VENTEC CANADA helps its customers in animal production to optimize the efficiency of their operations.

VENTEC CANADA products reduce animal stress due to temperature change, disease, injuries and mortality through innovative solutions for effective ventilation, patented and durable.

The accessibility of VENTEC CANADA products is via an international distribution network.

Contact us to get your nearest supplier

☎ 1 800 361-1003 | 🖨 450 383-4004 | ✉ info@ventec.ca | 🌐 www.ventec.ca

📍 4000, avenue Pinard, Saint-Hyacinthe (Quebec) Canada J2S 8K4